

2016 Edition

VMZINC GALLERY

United Kingdom
and
Ireland

Introduction

Company Profile VMZINC® manufactures a wide range of rolled zinc products for use in construction and has almost two centuries of experience. In addition to the standing seam system, products include rainwater systems, cladding systems and decorative roofing products such as dormers, bull's eyes, weather vanes, finials and balustrades. VMZINC is part of the Umicore Group which has worldwide interests in precious metal services, recycling of non-ferrous metals, and catalyst technologies for the automotive industry. It also manufactures substrates for photovoltaics and LEDs, materials for photonics and lenses, and optical assemblies for night vision applications.



- Benefits of VMZINC**
- Lightweight and durable
 - Fully recyclable
 - A design life of 80 years
 - Virtually maintenance-free
 - Can be installed on roof pitches as low as 3°
 - Complex shapes can be clad using VMZINC
 - All flashings and trim can be in the same material
 - BRE Green Guide certified
 - BBA certified
 - Conforms to EN 988
 - Fire performance rating 'AA' - BS 476: Part 3 ('low vulnerability' class in Scotland). Fire classification according to EN 13501-1:2002 - A2-s1,d0
 - Available in a choice of either natural finish or 7 pre-weathered finishes
 - Cost effective
 - Wide range of panel types



VMZINC Finishes

Front cover credits:
Architect – Aukett Swanke and Woods Bagot
Photographer – Paul Kozlowski

Contents

Commercial Development



4 Trinity Square – Offices



5 Weavers Court – Offices and Studios



6 Murphy Headquarters – Offices

Recreational Development



8 Hastings Pier – Amusement Facility



10 Foyle Arena – Sports Campus



11 Towerwood – Activity Centre

Educational/Cultural Building



12 Newcastle College – Campus Building



14 Winchester College – Student Hall



15 Dundee University – Experimental Building



16 Stonehenge – Visitor Centre

Collective Housing



18 Kingsland Wharves – Mixed Development



19 Parkwood – Town Houses

Private House Review



20



22



23

Commercial development

Offices

Trinity Square, London

Architect
Aukett Swanke
and
Woods Bagot

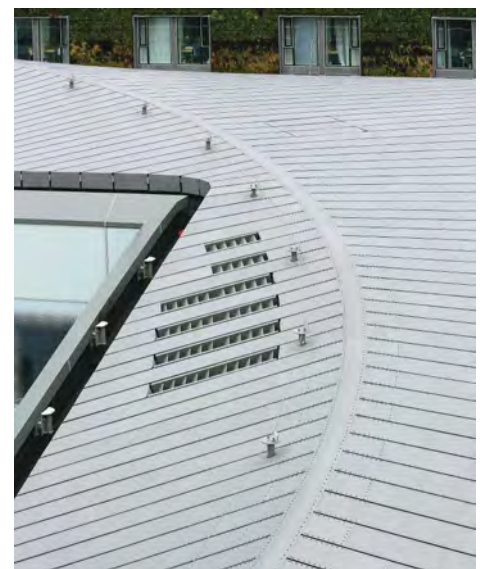
Contractor
Harley Curtain Wall

Type of zinc
QUARTZ-ZINC

System used
Non-standard
rainscreen roof

Surface area of zinc
3500m²

Photo credit
Paul Kozlowski



Commercial development

Offices and studios

**Creative Industries
Building,
Weavers Court
Business Park,
Belfast**

Architect
Brian McDowel Doherty
Architects

Contractor
DM Specialist Roofing

Type of zinc
QUARTZ-ZINC PLUS

System used
Standing seam roofing
and facade

Surface area of zinc
2100m²

Photo credit
Paul Kozlowski



Commercial development

Offices

**Murphy Headquarters,
Highgate Road,
London**

Architect

Brady Mallalieu Architects

Contractor

Roles Broderick Roofing

Type of zinc

ANTHRA-ZINC

System used

Interlocking panels

Surface area of zinc

250m²

Photo credit

Paul Kozlowski





Recreational development

Amusement facility

Hastings Pier, East Sussex

Architect
De Rijke Marsh Morgan
Architects

Contractor
Roles Broderick Roofing

Type of zinc
Natural VMZINC PLUS

System used
Standing seam roofing

Surface area of zinc
2100m²

Photo credit
Paul Kozlowski





Recreational development

Sports campus

**Foyle Arena,
North West Regional
Sports Campus,
Londonderry**

Architect
Samuel Stevenson & Sons

Contractor
Edgeline Metal Roofing

Type of zinc
QUARTZ-ZINC
and
QUARTZ-ZINC PLUS

System used
Standing seam roofing
and facade

Surface area of zinc
1900m²

Photo credit
Paul Kozlowski



Recreational development

Outdoor activity centre

**Tower Wood,
Lancashire**

Architect
Lancashire County Council

Contractor
Longworth

Type of zinc
PIGMENTO Green PLUS

System used
Standing seam roofing
and
rainwater downpipes

Surface area of zinc
800m²

Photo credit
Paul Kozlowski



Educational/cultural building

College campus building

**Parsons Tower,
Newcastle College,
Newcastle upon Tyne**

Architect
Redbox Design Group

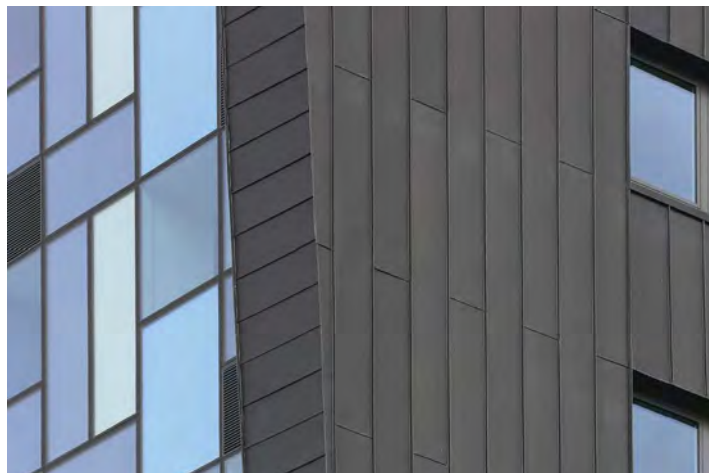
Contractor
Longworth

Type of zinc
QUARTZ-ZINC PLUS
and
ANTHRA-ZINC PLUS

System used
Standing seam roof
and facade

Surface area of zinc
2900m²

Photo credit
Paul Kozlowski





Educational/cultural building

Student hall

**New Hall,
Winchester College,
Winchester**

Architect
BHM

Contractor
Pace

Type of zinc
QUARTZ-ZINC PLUS

System used
Standing seam roofing
and gutters

Surface area of zinc
850m²

Photo credit
Paul Kozlowski



Educational/cultural building

University experimental/demonstrator building

MacroMicro Building, Dundee University

Architect

University of Dundee

Contractor

HL Metals

Type of zinc

ANTHRA-ZINC PLUS

System used

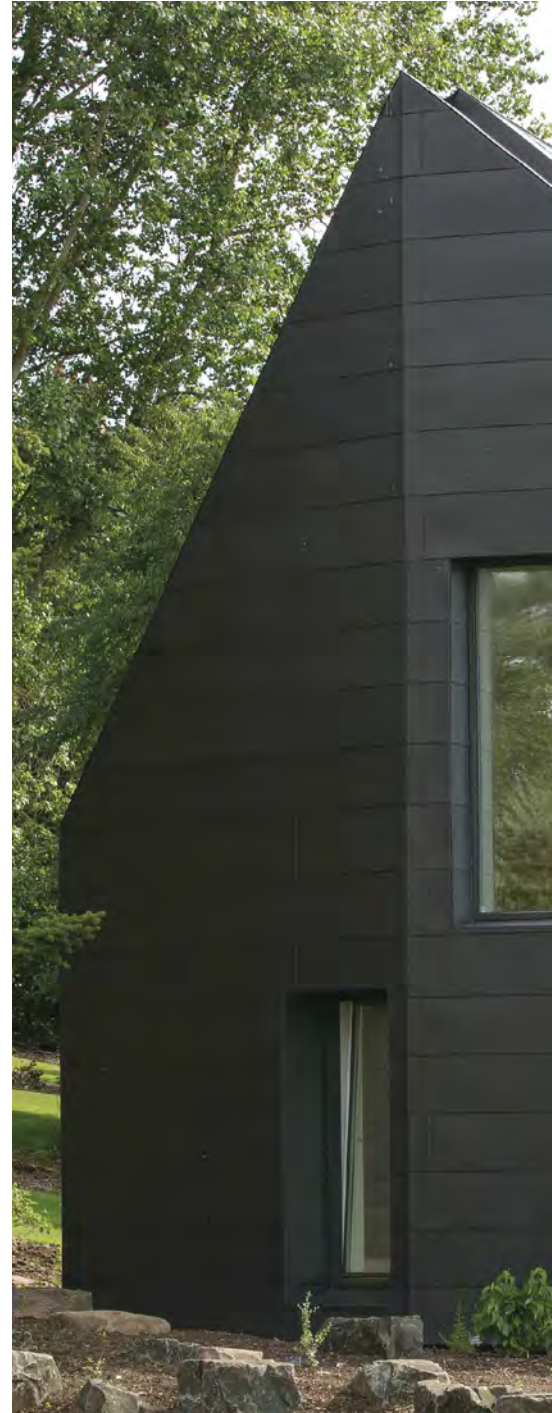
Standing seam roofing
and flat lock cladding

Surface area of zinc

65m²

Photo credit

Paul Kozlowski



Educational/cultural building

Visitor centre

**Stonehenge
Visitor Centre,
Wiltshire**

Architect
Denton Corker Marshall

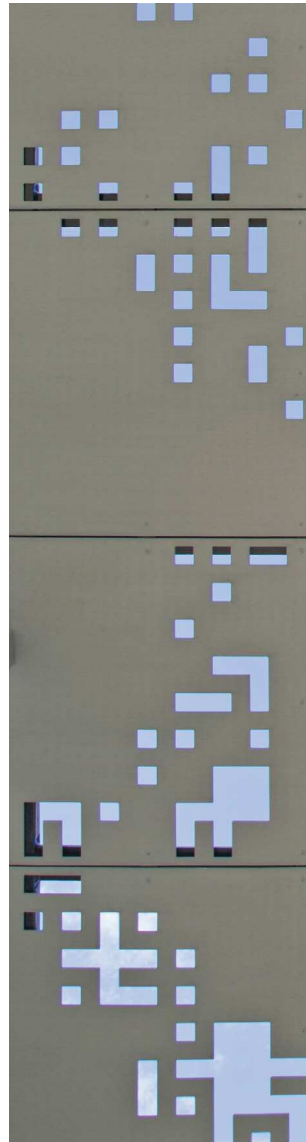
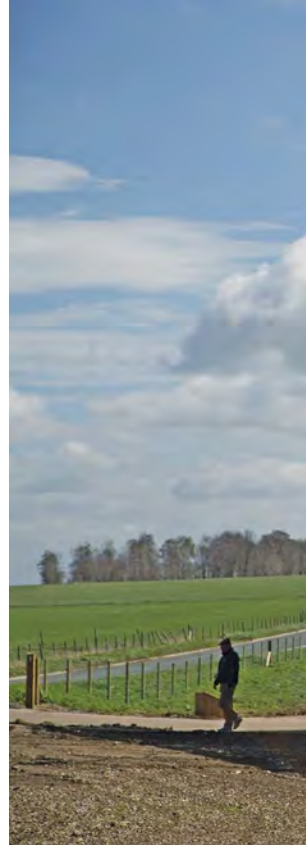
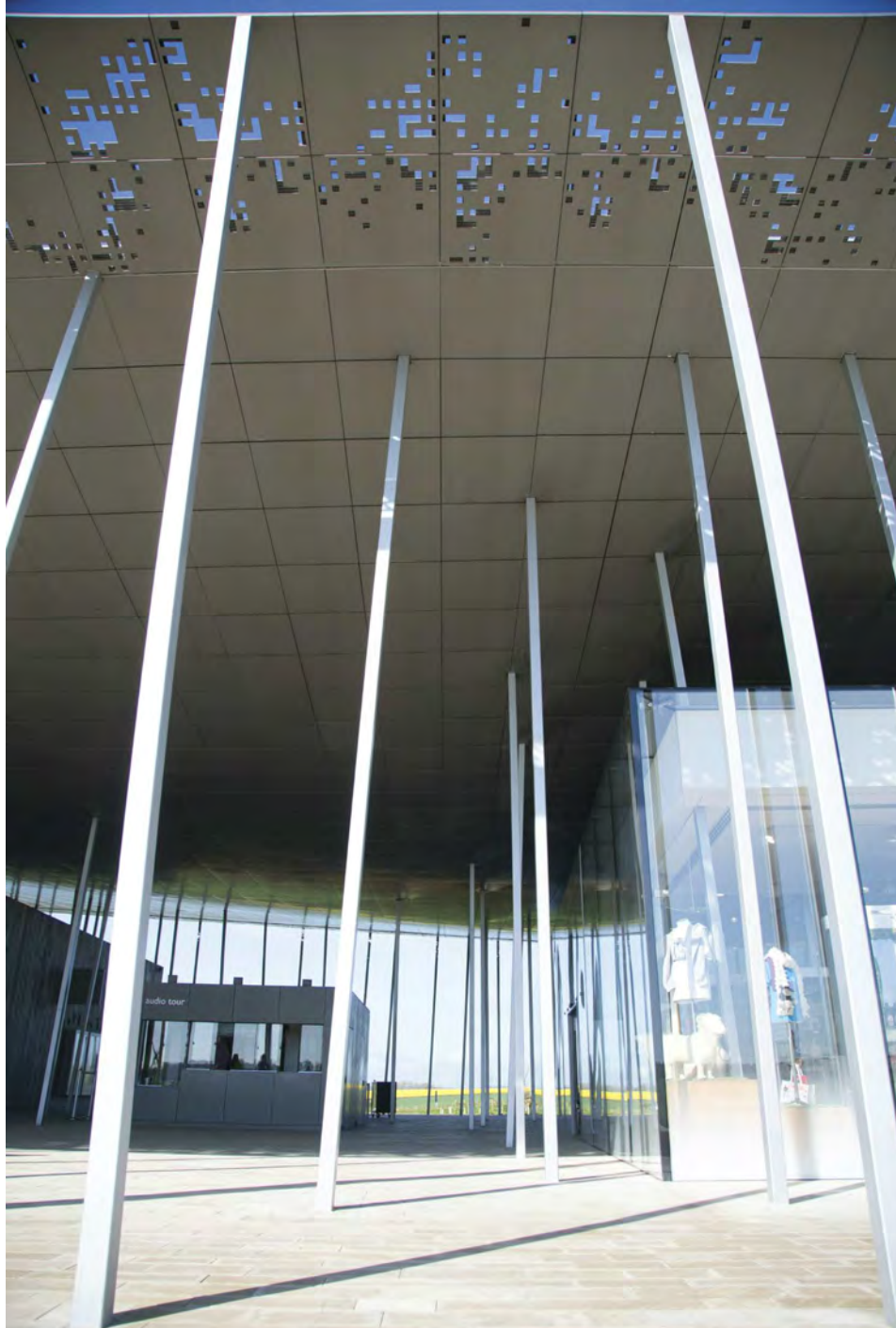
Contractor
Massey Cladding

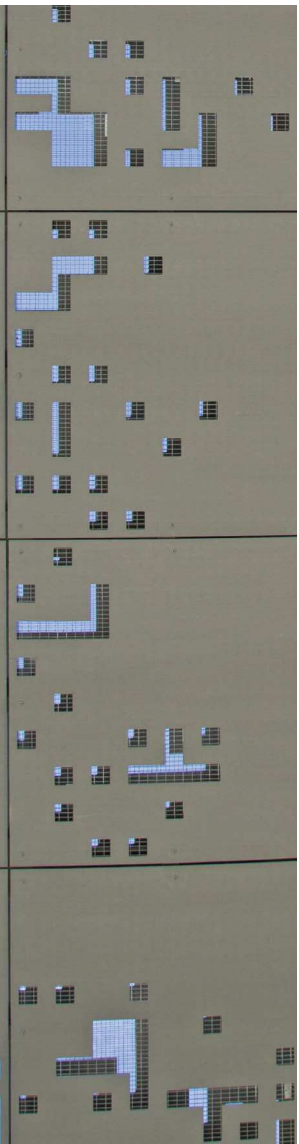
Type of zinc
QUARTZ-ZINC

System used
VMZ composite panels

Surface area of zinc
3500m²

Photo credit
James O'Davies





Collective housing

Mixed private development

**Kingsland Wharves,
Islington,
London**

Architect
JCMT Architects

Contractor
All Metal Roofing

Type of zinc
PIGMENTO Red,
PIGMENTO Blue,
QUARTZ-ZINC

System used
Standing seam facade

Surface area of zinc
3000m²

Photo credit
Paul Kozlowski



Collective housing

Town houses

**Parkwood,
Winchester,
Hampshire**

Architect
Snug Architects

Contractor
Pace

Type of zinc
ANTHRA-ZINC
and
ANTHRA-ZINC PLUS

System used
Standing seam cladding

Surface area of zinc
1100m²

Photo credit
Paul Kozlowski



Private house review

Domestic versatility

A

Tom Woodyer,
Alex McIntyre Architects

B

Daniel Stewart Architect

C

Howarth Litchfield
Partnership

D

Once Architecture





Private house review

Domestic versatility

A

Studio Weave

B

Brian Cobbe & Associates

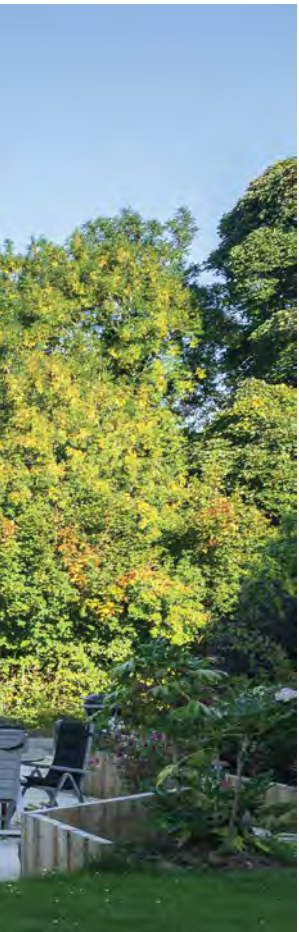
C

Huw Thomas Architects

D

C & M Architects





Use a Professional

As well as following design recommendations it is critical that VMZINC is installed in the correct manner and by trained professionals.

VMZINC provides training for installers with experience in metal roofing and cladding in partnership with the Lead Sheet Association. This training is designed to supplement trained professionals with specific information concerning VMZINC.

VMZINC at Work

We would also recommend that contractors be members of associations such as the Federation of Traditional Metal Roofing Contractors. Furthermore, VMZINC offers a list of recognised contractors that adhere to specific conditions concerning experience and training, namely VMZINC at WORK.

CAD Details

A large library of CAD drawings in both .dwg and .pdf format is available. We also offer BIM objects.

NBS Specifications

We offer specifications for all of our systems. These can be either downloaded or sent out from our office.

CPD Seminars

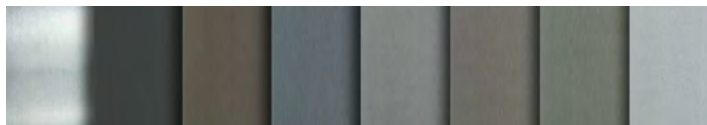
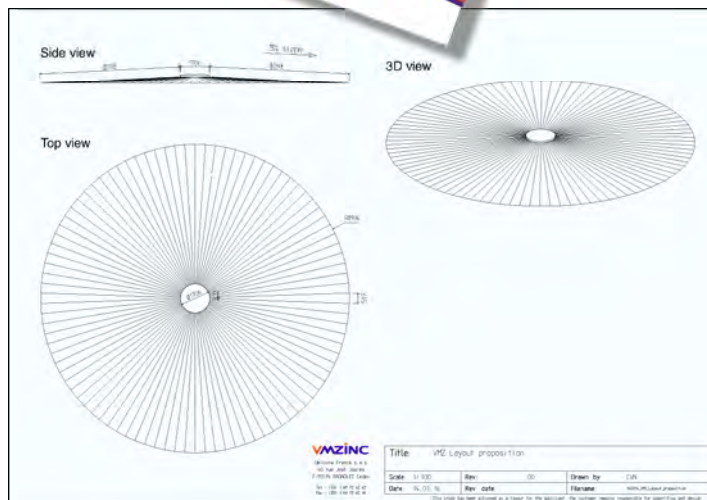
Please contact us to book a CPD seminar entitled 'Zinc as Building Envelope'. This seminar covers many subjects including aesthetics, applications, design requirements, installation methods as well as sustainability.

Bespoke Roof and Wall Design

Panel layouts and project specific details can be created for projects when standard detailing may not quite be enough.

Samples

Please contact us for material samples on all of our finishes. We can also send out larger samples for planning. All our literature is also available online and in paper format.



Umicore Marketing Services UK

Collier House,
Mead Lane,
Hertford, Herts,
SG13 7AX

vmzinc.uk@vmzinc.com
www.vmzinc.co.uk
01992 822288

